

MARO Cable Grip Plate system



 **Hankil**
TECH MEDICAL

**ISO**
13485:2016

**CE**
2460

**GMP**
Good Manufacturing Practice



HANKIL Cable and Sleeve System

Advanced Principle Implants System

Application

- Proximal Femur Fracture
- Femur Shaft Fracture
- Hip Joint Arthroplasty
- Humerus Fracture
- Available Case of Trauma

Composition

- 1.6mm Cable & Sleeve
- 2.0mm Cable & Sleeve
- Short Grip Plate
- Long Grip Plate
- Cable Bone Plate

Cable Grip Plate



Short Grip Plate



Long Grip Plate (1H ~ 8H)

No.	Cable Grip hook Plate	Length (mm)	Spec.	Material
	Normal			
1	447-30000	52.0	Short	Stainless Steel
2	447-30001	90.0	1H	
3	447-30002	112.0	2H	
4	447-30003	125.0	3H	
5	447-30004	147.0	4H	
6	447-30005	169.0	5H	
7	447-30006	191.0	6H	
8	447-30007	213.0	7H	
9	447-30008	235.0	8H	

Cable Bone Plate



NO.	Cable Bone Plate(316LVM)	Length(mm)	Remark	Material
	Normal			
1	446-32006	130.0	6H	Stainless Steel
2	446-32007	152.0	7H	
3	446-32008	174.0	8H	
4	446-32010	218.0	10H	

Sleeve & Cable



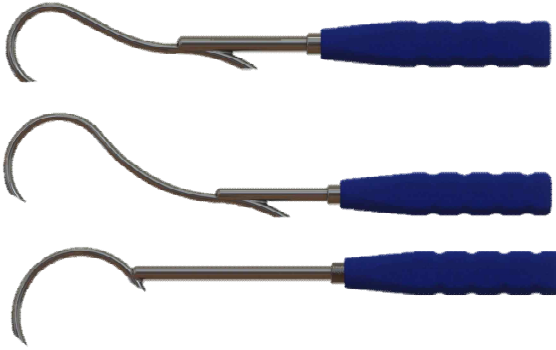
Cable

NO.	Cable	Length(mm)	Spec.	Material
1	440-37016	750	1.6	Stainless Steel
2	440-39018	750	1.8	
3	440-37020	750	2.0	

Sleeve

NO.	Sleeve	Length(mm)	Spec.	Material
1	442-30016	8.4	1.6	Stainless Steel
2	442-30018	8.4	1.8	
3	442-30020	8.4	2.0	

Code No.	Description
16301-00101	Holding Impactor

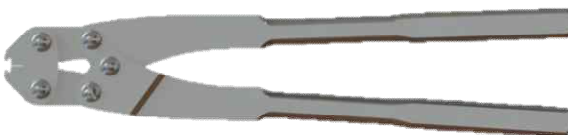
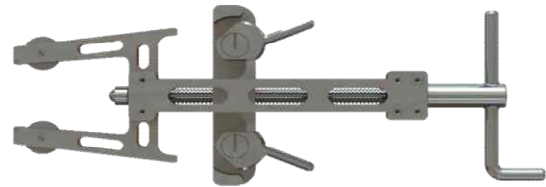


Code No.	Description	Size
16301-00201	Wire Passer	Small
16301-00202		Large
16301-00203		Half Circle

Code No.	Description
16301-00301	Wire Tensioner



Code No.	Description
16301-00302	Wire Tensioner

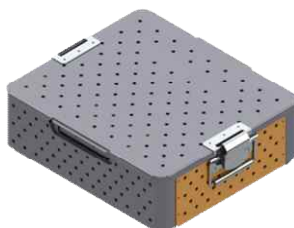
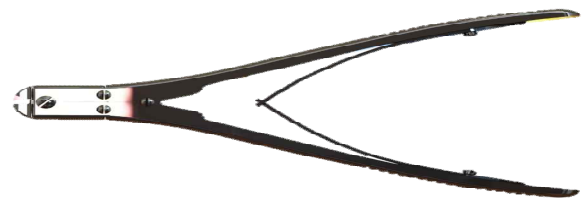


Code No.	Description
16301-00401	Sleeve Gripper

Code No.	Description
16301-00501	Wire Cutter



Code No.	Description
16301-00502	Wire Cutter



Code No.	Description
16381-01001	Container (340X300X110)

MARO Cable Grip Plate System

Grip Plate Position

